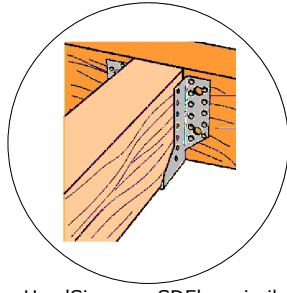
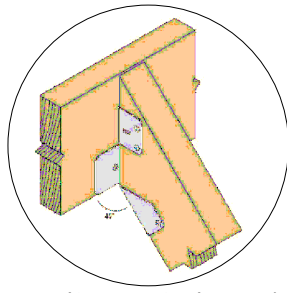


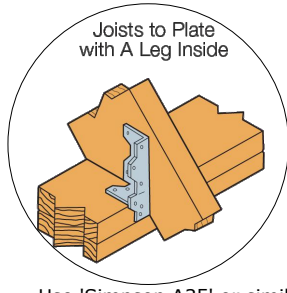
Use 'Simpson JHM' or similar approved joist hanger for timber joists to masonry wall connection



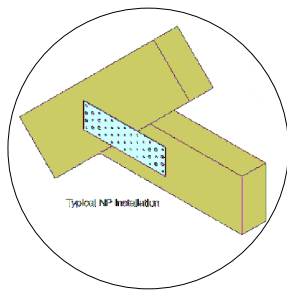
Use 'Simpson SDE' or similar approved joist hanger for joists to joist/timber beam connection



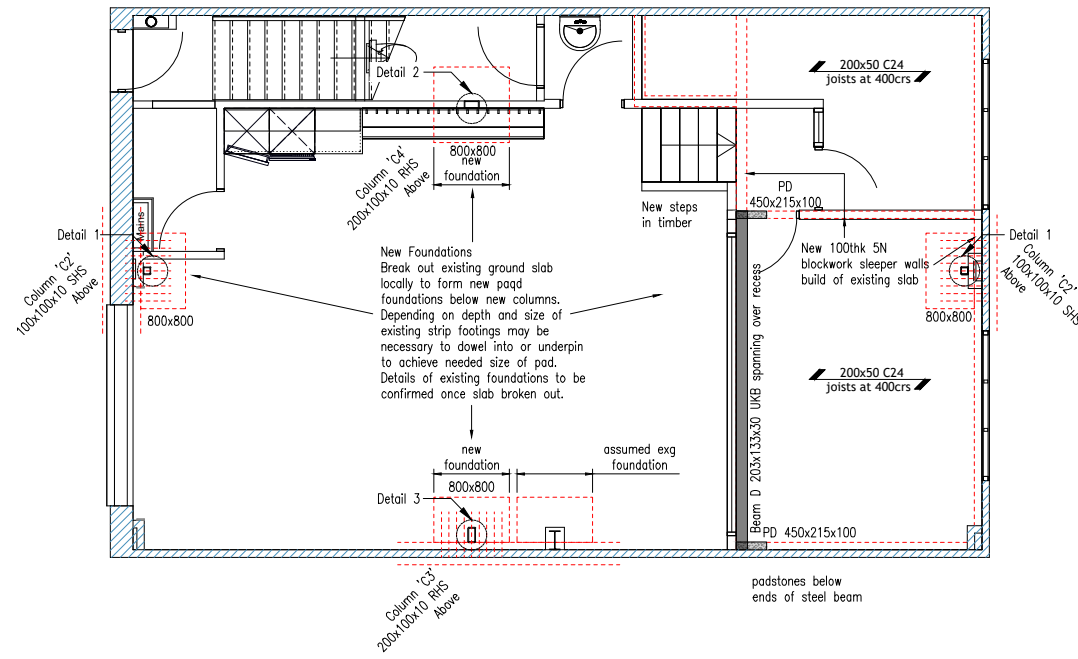
Use 'Simpson SPR' or similar approved slope adjustable joist hangers for rafters to timber beams connection



Use 'Simpson A35' or similar approved connection for timber joists to wall plate



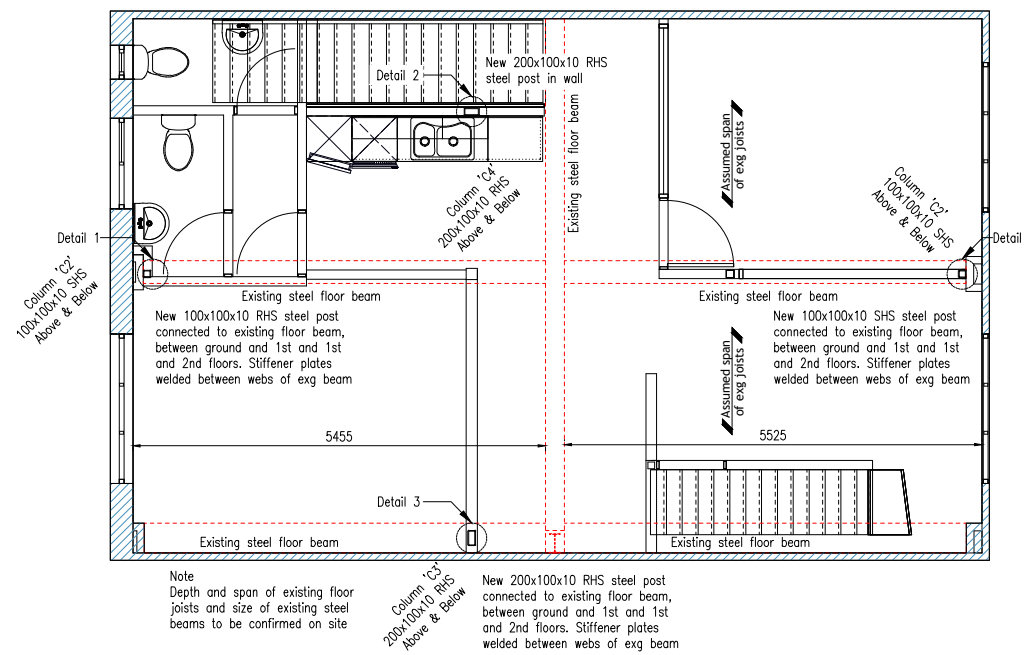
Use 'Simpson NP100/200' or similar approved plates, one on each side of the timber connection. Angle to suit the site dimensions. Min 20 nails 3.75x30



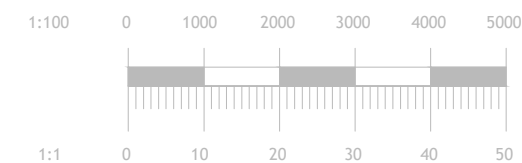
Proposed Ground Floor Plan Showing Structural Elements at Slab/Foundation Level
Scale 1:100

ALL STEEL TO BE GRADE S355 U.N.O.	
BEAMS SCHEDULE & KEY	
Steel Trimmer Beams	□ UKPFC100x50x10
Steel Beams 'A', 'B' & 'C'	▭ UKC203x203x46
Steel Beam 'D'	▭ UKB203x133x30
Steel Posts	□ 100 SHS 10
Columns 'C1' & 'C2'	□ 100 SHS 10
Columns 'C3' & 'C4'	□ RSH 200x100x10
	Timber Floor Joists/Rafters C24 50x200 at 400mm c/c. Double-up where shown
	Timber Lintel 2 x C24 50x200, or similar approved

All steel beams carrying load-bearing masonry walls wider than their flanges are to have 12mm thick top/bottom flange plates continuously welded along the length to suit the wall width U.N.O.



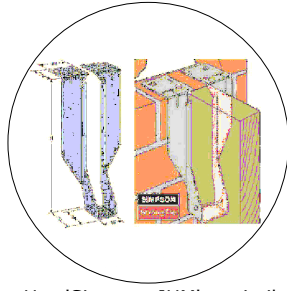
Proposed First Floor Plan Showing Structural Elements at Slab Level
Scale 1:100



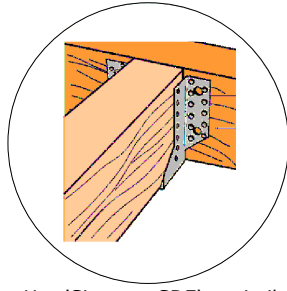
- Issue for information 26.10.2023 PAS

Revision	Date	Initial
Status		
PRELIMINARY		
Project	ALPHA CREW HQ UNIT 3 - PEERGLow ESTATE EN3 4SB	
Client	KAMIL KOVAR	
Drawing Title	GROUND AND FIRST FLOOR PLAN	
Date	Scale	Drawn by
OCT 2023	AS SHOWN AT A3	PAS
Project No	Drawing No	Revision
SH2319	01	-

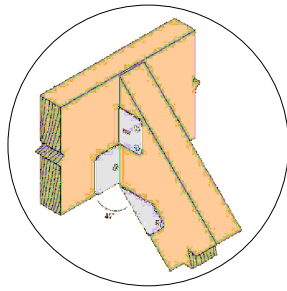
HITCHIN OFFICE
40A WILBURY WAY
HITCHIN HERTFORDSHIRE
SG4 0AP
info@surreyhillseng.co.uk
visit: www.surreyhillseng.co.uk



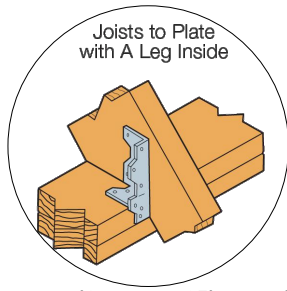
Use 'Simpson JHM' or similar approved joist hanger for timber joists to masonry wall connection



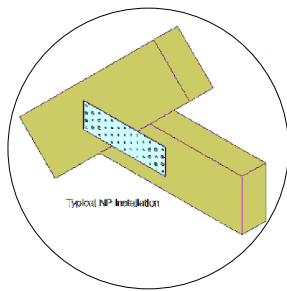
Use 'Simpson SDE' or similar approved joist hanger for joists to joist/timber beam connection



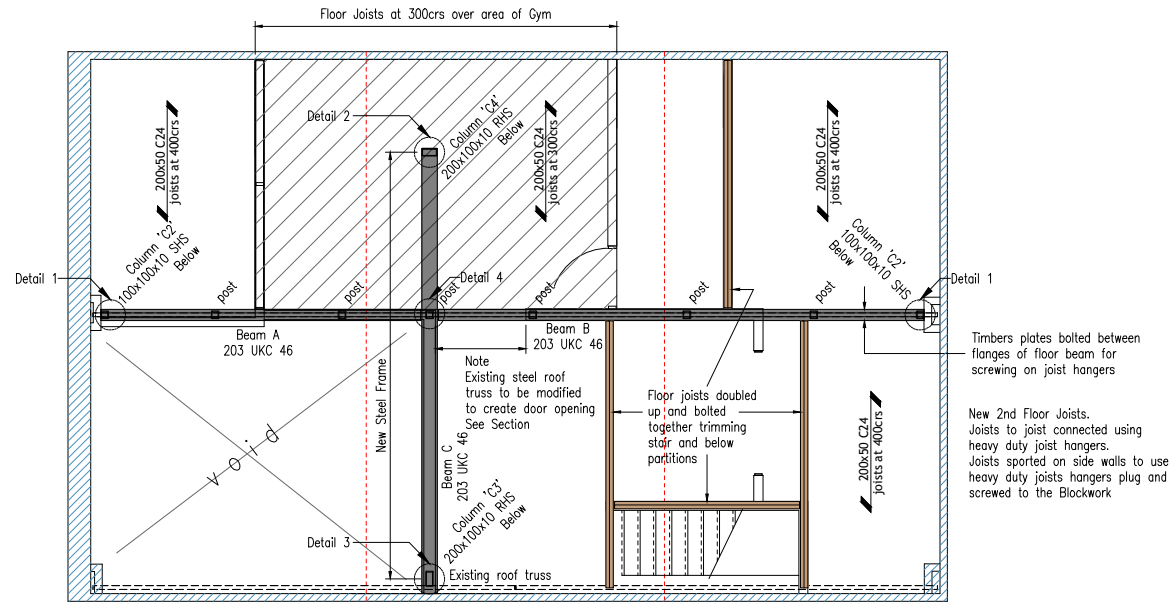
Use 'Simpson SPR' or similar approved slope adjustable joist hangers for rafters to flat timber beams connection



Use 'Simpson A35' or similar approved connection for timber joists to wall plate



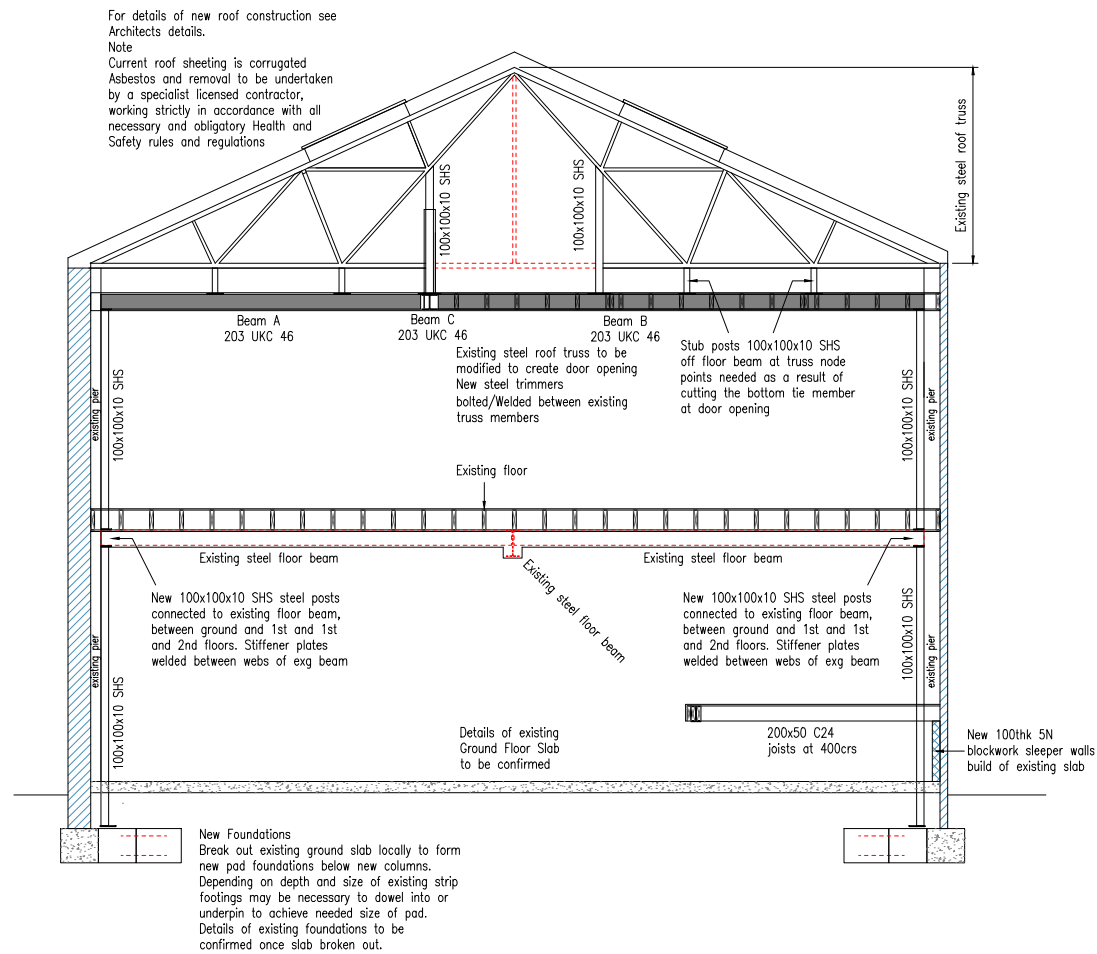
Use 'Simpson NP100/200' or similar approved plates, one on each side of the timber connection. Angle to suit the site dimensions. Min 20 nails 3.75x30



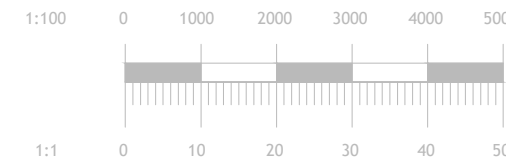
Proposed Second Floor Plan Showing Structural Elements at Slab Level
Scale 1:100

ALL STEEL TO BE GRADE S355 U.N.O.	
BEAMS SCHEDULE & KEY	
Steel Trimmer Beams	□ UKPFC100x50x10
Steel Beams 'A', 'B' & 'C'	▭ UKC203x203x46
Steel Beam 'D'	▭ UKB203x133x30
Steel Posts	□ 100 SHS 10
Columns 'C1' & 'C2'	□ 100 SHS 10
Columns 'C3' & 'C4'	□ RSH 200x100x10
	Timber Floor Joists/Rafters C24 50x200 at 400mm c/c. Double-up where shown
	Timber Lintel 2 x C24 50x200, or similar approved

All steel beams carrying load-bearing masonry walls wider than their flanges are to have 12mm thick top/bottom flange plates continuously welded along the length to suit the wall width U.N.O.



Proposed Section on central Truss line
Scale 1:100

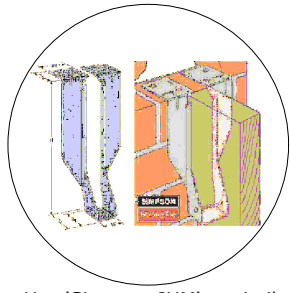


- Issue for information 26.10.2023 PAS

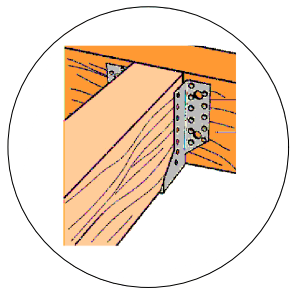
Revision	Date	Initial
Status		
PRELIMINARY		
Project	ALPHA CREW HQ UNIT 3 - PEERGLow ESTATE EN3 4SB	
Client	KAMIL KOVAR	
Drawing Title	SECOND FLOOR PLAN AND SECTION	
Date	Scale	Drawn by
OCT 2023	AS SHOWN AT A3	PAS
Project No	Drawing No	Revision
SH2319	02	-

HITCHIN OFFICE
40A WILBURY WAY
HITCHIN HERTFORDSHIRE
SG4 0AP
info@surreyhillseng.co.uk
visit: www.surreyhillseng.co.uk

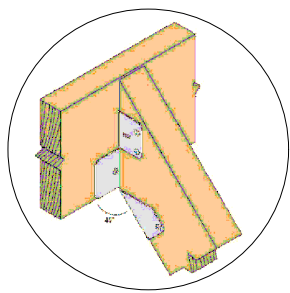




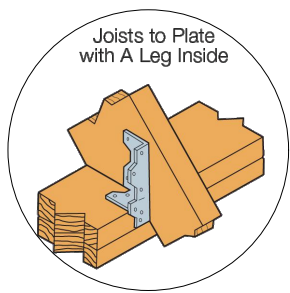
Use 'Simpson JHM' or similar approved joist hanger for timber joists to masonry wall connection



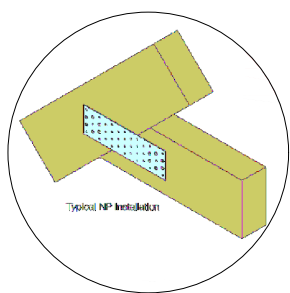
Use 'Simpson SDE' or similar approved joist hanger for joists to joist/timber beam connection



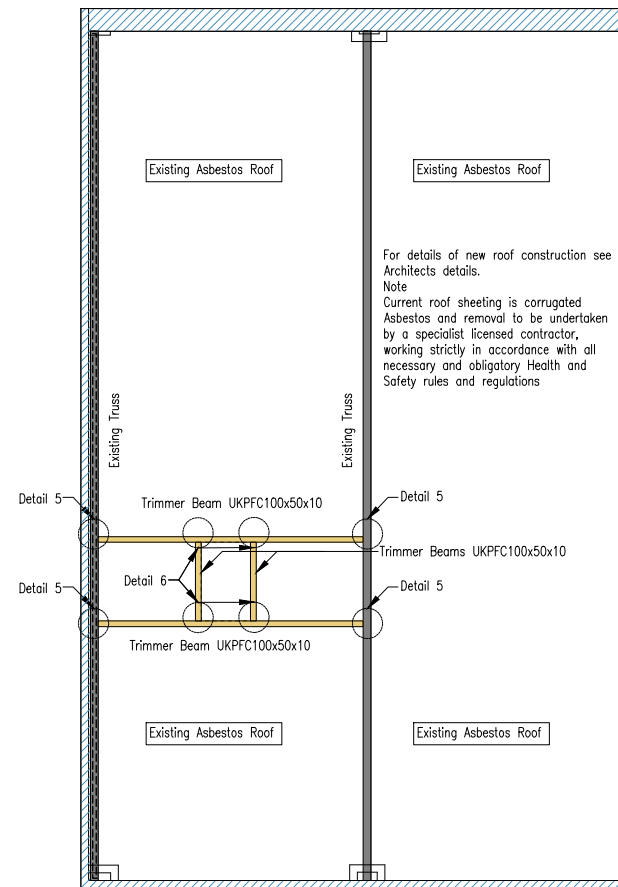
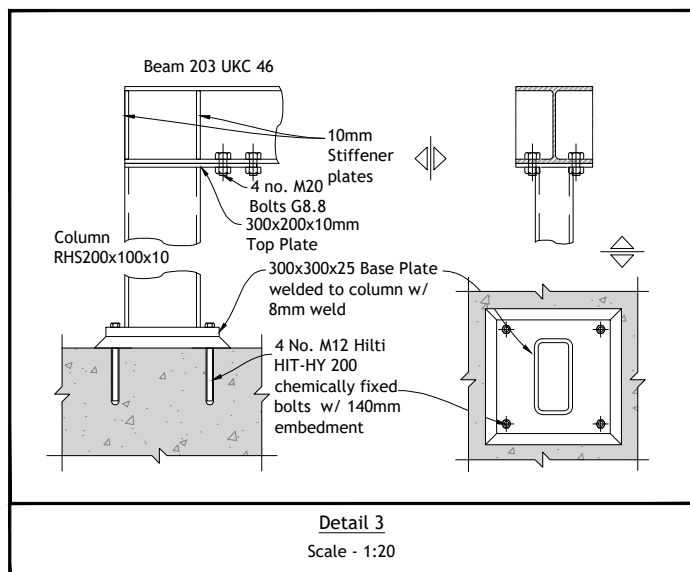
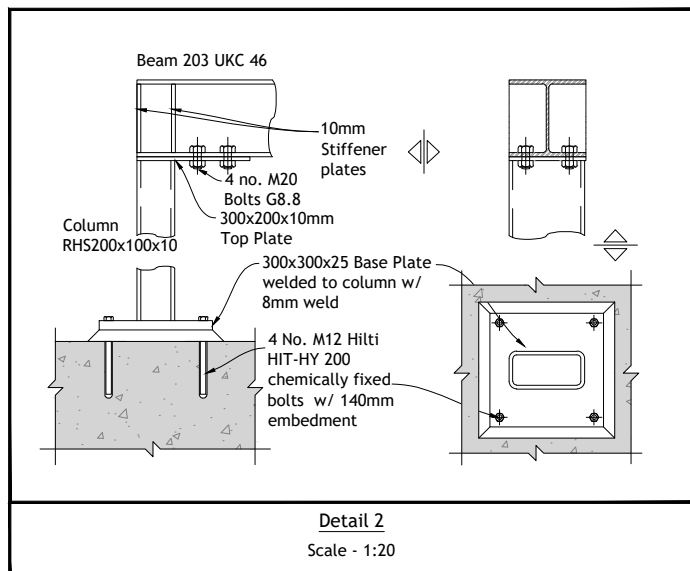
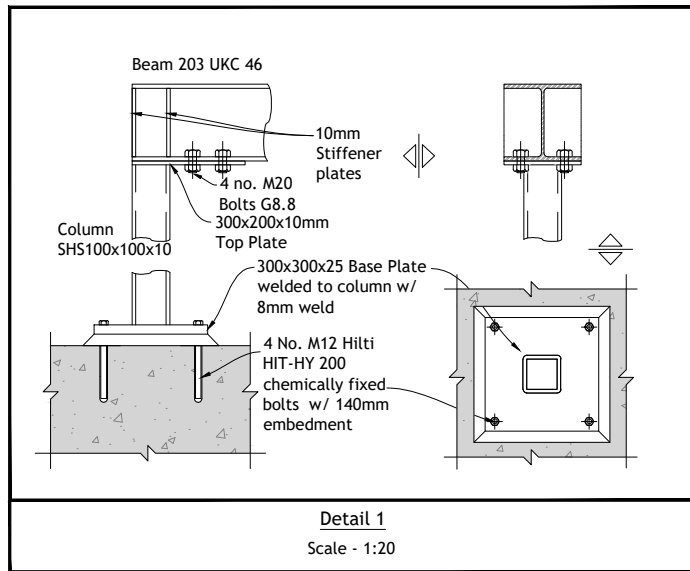
Use 'Simpson SPR' or similar approved slope adjustable joist hangers for rafters to flat timber beams connection



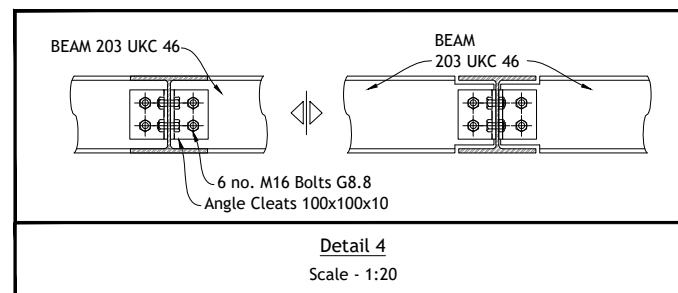
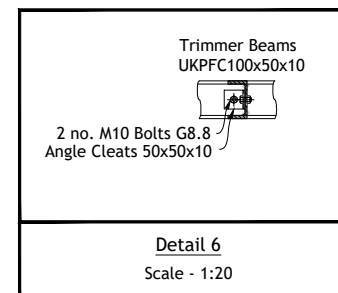
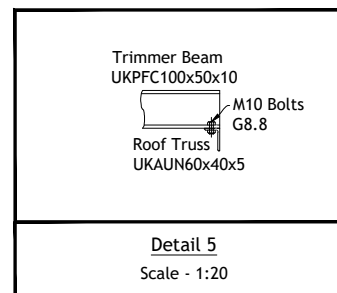
Use 'Simpson A35' or similar approved connection for timber joists to wall plate



Use 'Simpson NP100/200' or similar approved plates, one on each side of the timber connection. Angle to suit the site dimensions. Min 20 nails 3.75x30



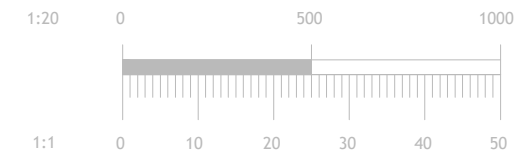
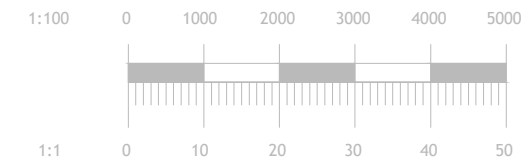
Proposed Roof Plan Showing Structural Elements Within Roof
Scale 1:100



ALL STEEL TO BE GRADE S355 U.N.O.

BEAMS SCHEDULE & KEY	
Steel Trimmer Beams	UKPFC100x50x10
Steel Beams 'A', 'B' & 'C'	UKC203x203x46
Steel Beam 'D'	UKB203x133x30
Steel Posts	100 SHS 10
Columns 'C1' & 'C2'	100 SHS 10
Columns 'C3' & 'C4'	RSH 200x100x10
50x200 400 c/c	Timber Floor Joists/Rafters C24 50x200 at 400mm c/c. Double-up where shown
L1	Timber Lintel 2 x C24 50x200, or similar approved

All steel beams carrying load-bearing masonry walls wider than their flanges are to have 12mm thick top/bottom flange plates continuously welded along the length to suit the wall width U.N.O.



- Issue for information 26.10.2023 PAS

Revision	Date	Initial
Status		
PRELIMINARY		
Project	ALPHA CREW HQ UNIT 3 - PEERGLow ESTATE EN3 4SB	
Client	KAMIL KOVAR	
Drawing Title	ROOF PLAN AND DETAILS	
Date	Scale	Drawn by
OCT 2023	AS SHOWN AT A3	PAS
Project No	Drawing No	Revision
SH2319	03	-

HITCHIN OFFICE
40A WILBURY WAY
HITCHIN HERTFORDSHIRE
SG4 0AP
info@surreyhillseng.co.uk
visit: www.surreyhillseng.co.uk

