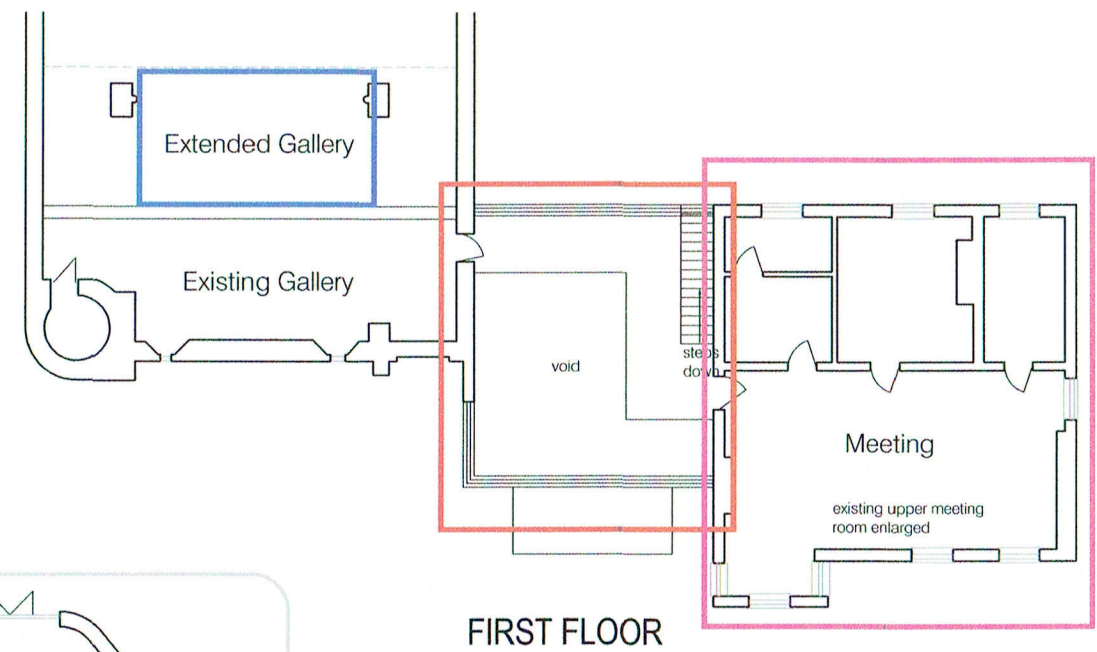


GROUND FLOOR

MASTER PLAN.
NOT TO SCALE



FIRST FLOOR

	PAGES
PHASE 1	02, 03, 04, 05, 06, 07, 08
PHASE 2	09, 10, 11, 12
PHASE 3	13, 14, 15.
PHASE 4	16.

NOTE: phasing indicated for fee estimation purposes only.

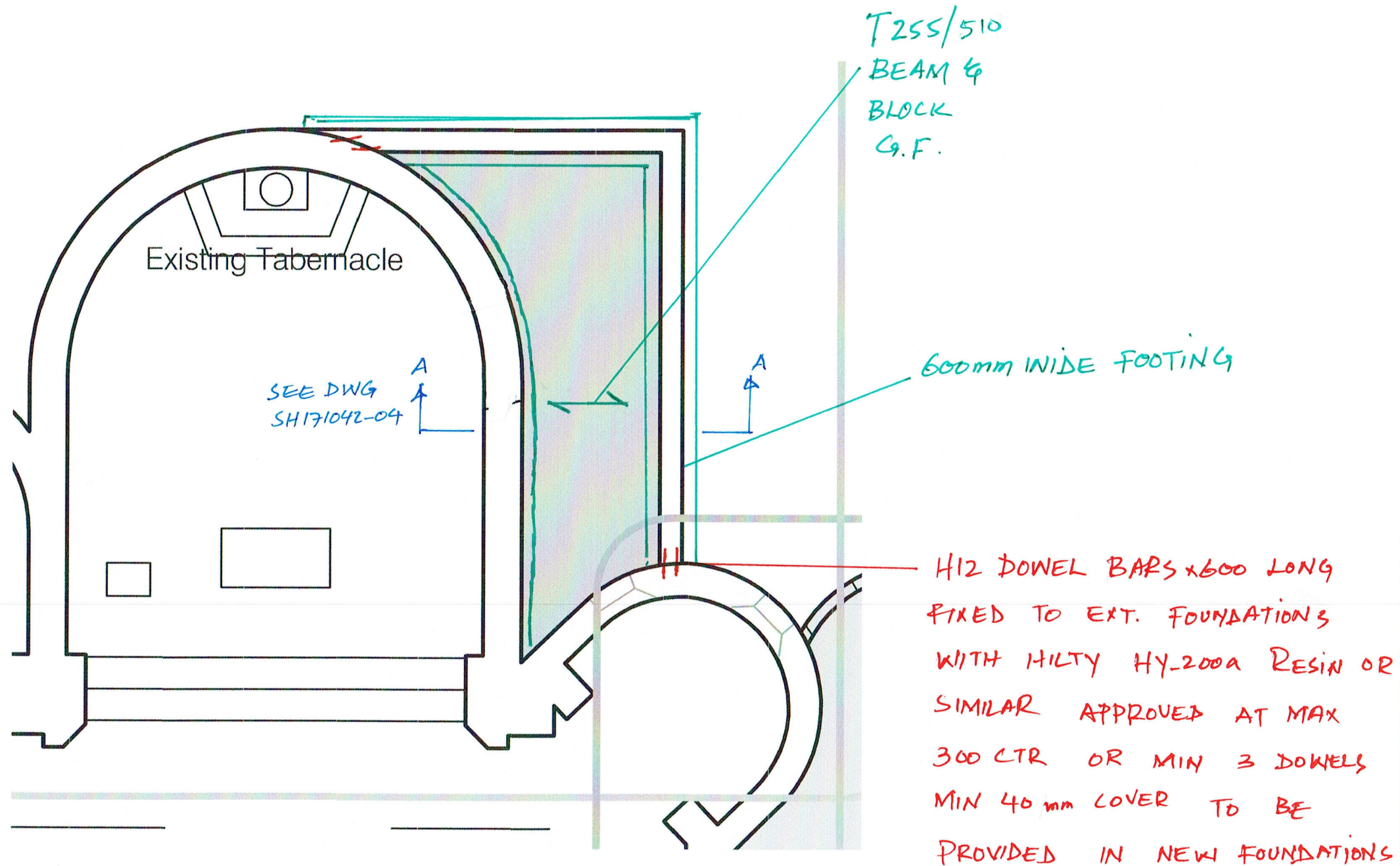
Surrey Hills Consulting Engineers
 Alexander House
 40A Wilbury Way
 Hitchin
 Herts
 SG4 0AP 01462 510102

SURREY HILLS

Project: *St. Joseph's Church*
 Description: *ARCHITECT M-PLAN.*
 Status: _____ Scale: _____ Rev: _____
 Originator: _____ Checked: _____ Dated: *Jan 18*
 Drawing / Sketch No: *SH171042-01*

PHASE 1 (a)
(1 of 3)

SINGLE STOREY EXTENSION (CHAPEL)



NOTES:

- TEMPORARY WORKS TO BE INSTALLED / DESIGNED FOR ALL FOUR PHASES.
- CDM REGULATIONS TO BE PROVIDED / BY OTHERS.

PART GROUND FLOOR PLAN.

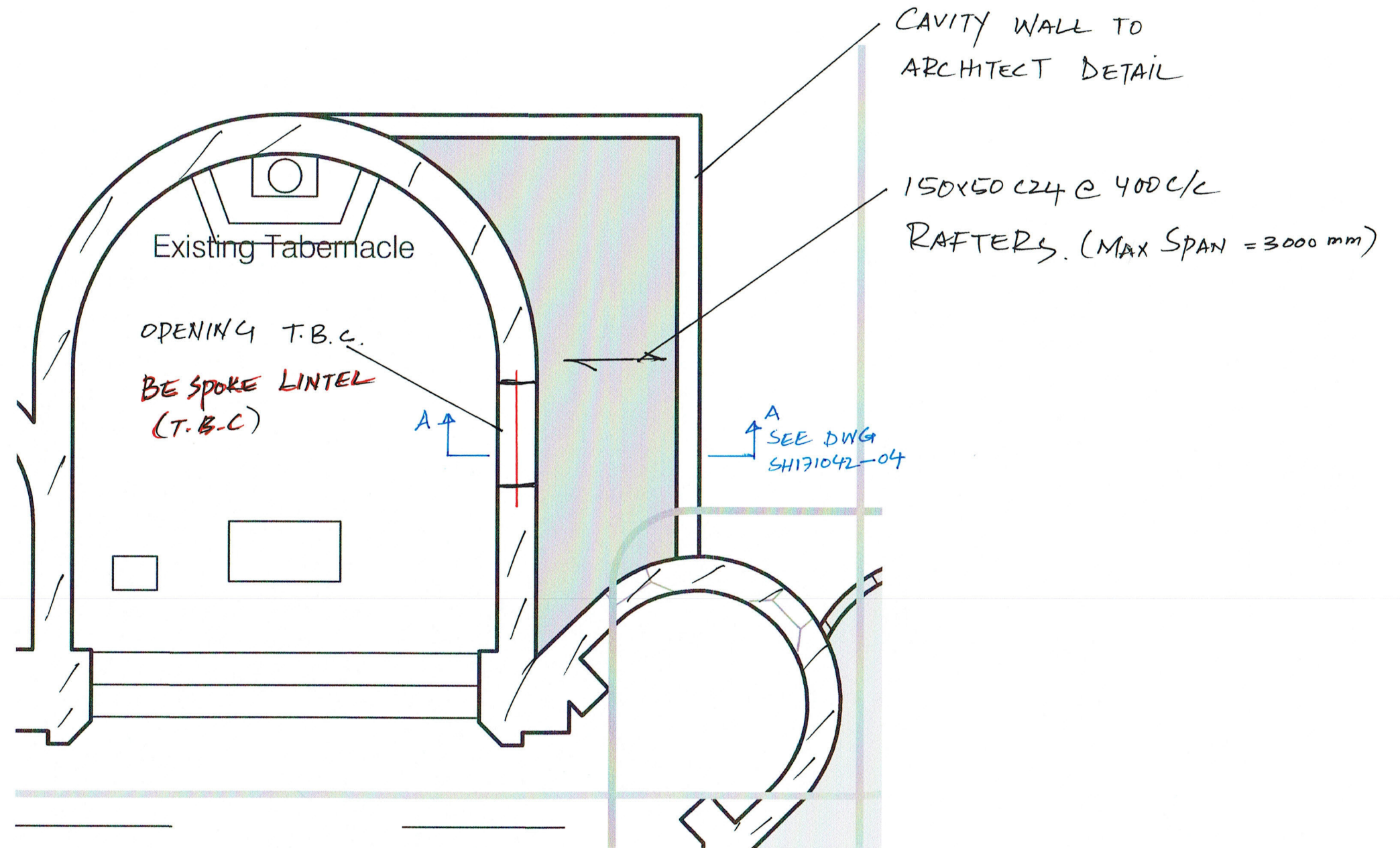
SHOWING FOUNDATIONS

N.T.S

Surrey Hills Consulting Engineers Alexander House 40A Wilbury Way Hitchin Herts SG4 0AP 01462 510102			
Project: <i>St. Joseph's Church</i>			
Description: <i>Conceptual Design</i>			
Status: <i>PK</i>	Scale: <i>N.T.S</i>	Rev:	
Originator: <i>N.R</i>	Checked: <i>N.M</i>	Dated: <i>Jan 16</i>	
Drawing / Sketch No: <i>SH171042-02</i>			

PHASE 1 (A)
 (2 of 3)


SINGLE STOREY REAR EXTENSION (CHAPEL)



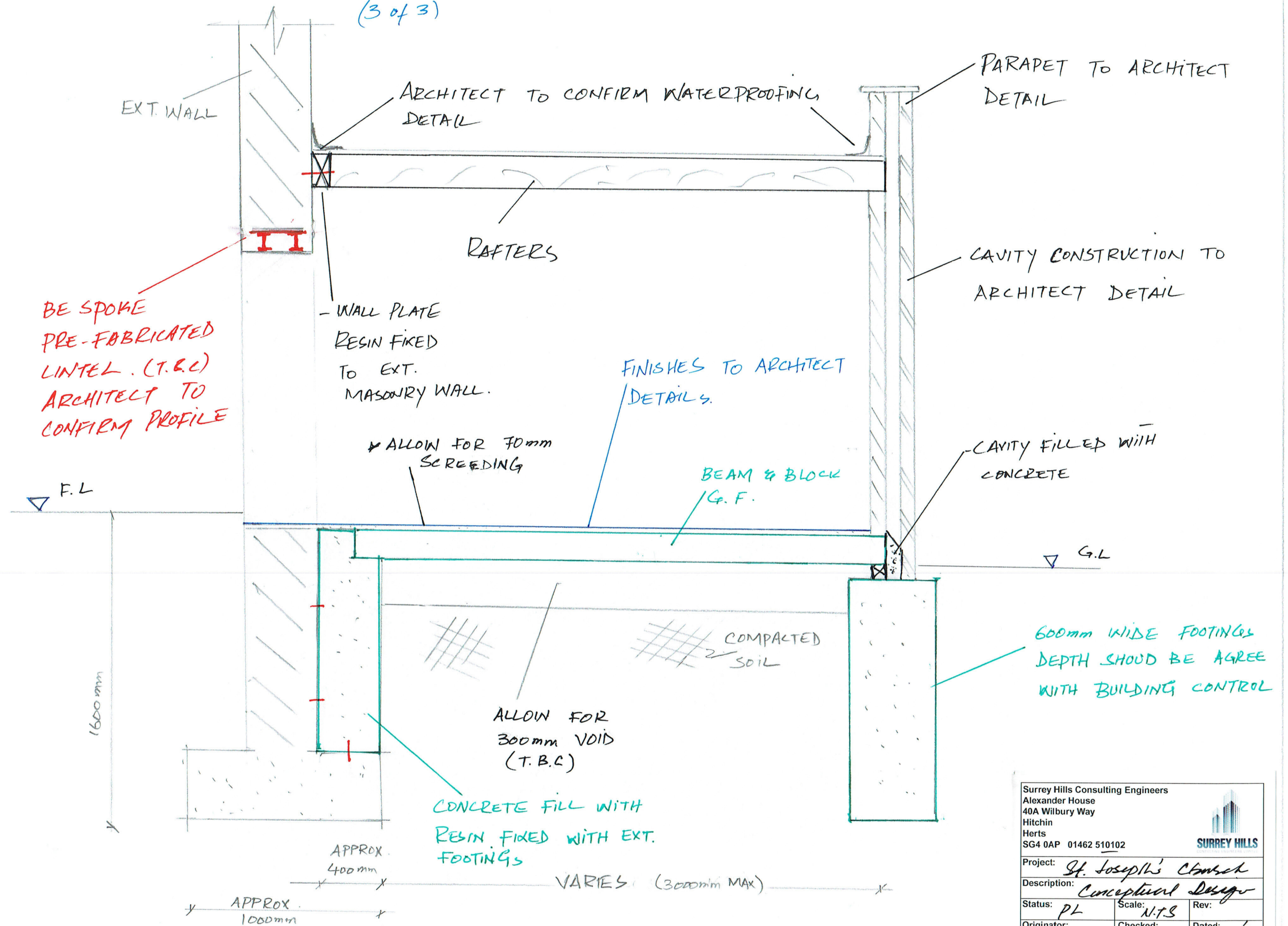
PART GROUND FLOOR PLAN.

SHOWING STRUCTURE OVER

N.T.S

Surrey Hills Consulting Engineers Alexander House 40A Wilbury Way Hitchin Herts SG4 0AP 01462 510102			 SURREY HILLS
Project: <i>St. Joseph's church</i>			
Description: <i>Concept Design</i>			
Status: <i>DL</i>	Scale: <i>N.T.S</i>	Rev:	
Originator: <i>N.K</i>	Checked: <i>N.M</i>	Dated: <i>Jan 18</i>	
Drawing / Sketch No: <i>SH171042-03</i>			

PHASE 1 (A) SINGLE STOREY EXTENSION (CHAPEL)
(3 of 3)



BE SPOKE
PRE-FABRICATED
LINTEL (T.B.C)
ARCHITECT TO
CONFIRM PROFILE

F.L.

1600mm

APPROX
1000mm

APPROX
400mm

VARIABLE (3000mm MAX)

ALLOW FOR
300mm VOID
(T.B.C)

CONCRETE FILL WITH
RESIN FIXED WITH EXT.
FOOTINGS

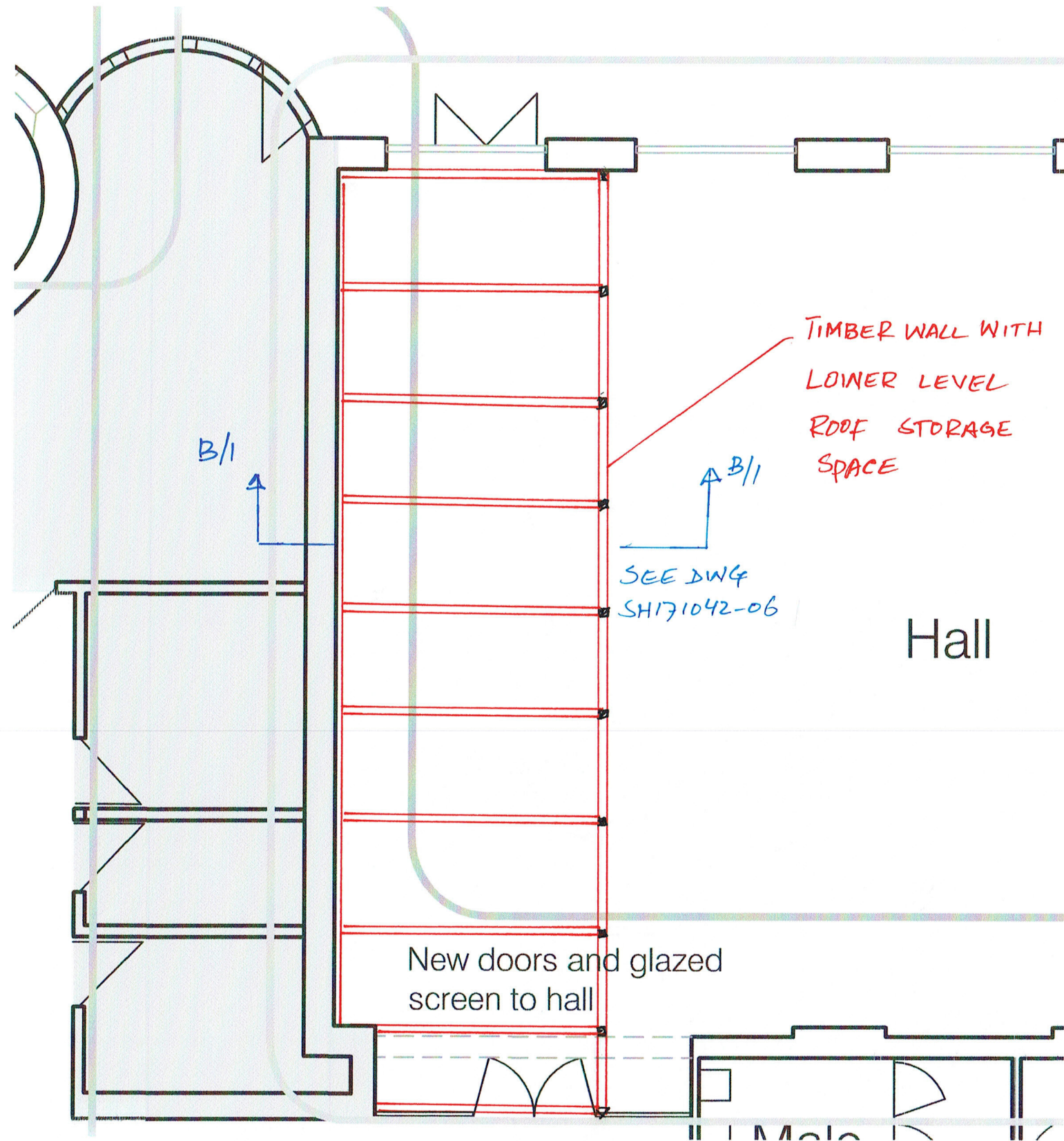
SECTION A-A

N.T.S.

Surrey Hills Consulting Engineers Alexander House 40A Wilbury Way Hitchin Herts SG4 0AP 01462 510102			
Project: <i>St. Joseph's Church</i>			
Description: <i>Conceptual Design</i>			
Status: <i>PL</i>	Scale: <i>N.T.S.</i>	Rev:	
Originator: <i>N.M.</i>	Checked: <i>N.M.</i>	Dated: <i>Jan 18</i>	
Drawing / Sketch No: <i>SH 17/042 - 04</i>			

PHASE 1 (b)
(1 of 4)

ERECTION OF STUD WALL IN PARISH HALL



TIMBER WALL WITH
LOWER LEVEL
ROOF STORAGE
SPACE


Hall

New doors and glazed
screen to hall

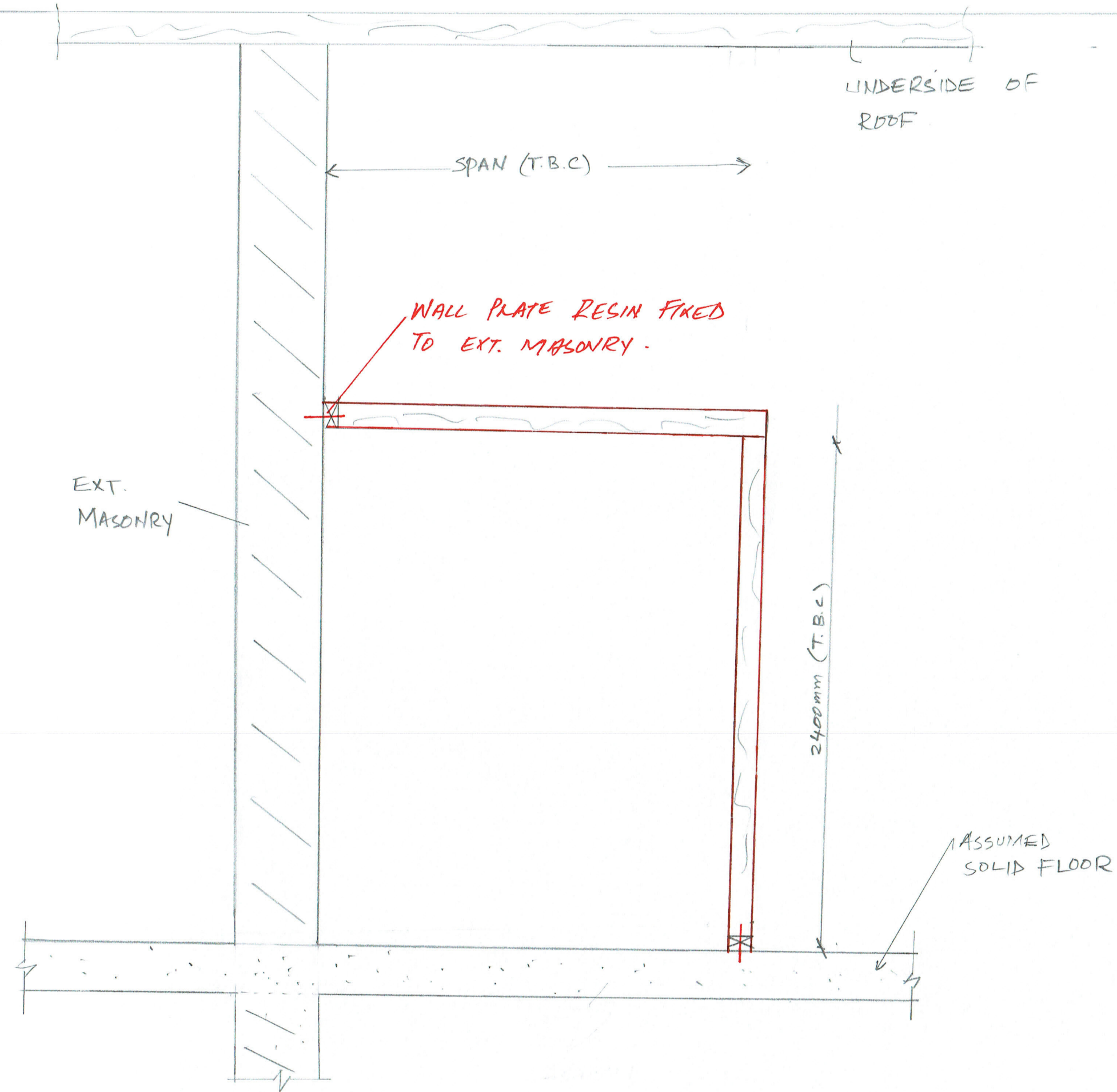
SEE DWG
SH171042-06

OPTION - A.

PART GROUND FLOOR PLAN SHOWING
TIMBER STUD GENERAL ARRANGEMENT.
N.T.S.

Surrey Hills Consulting Engineers Alexander House 40A Wilbury Way Hitchin Herts SG4 0AP 01462 510102			
Project: <i>St. Joseph's church</i>			
Description: <i>Conceptual Design</i>			
Status: <i>P.I.</i>	Scale: <i>N.T.S.</i>	Rev:	
Originator: <i>N.K.</i>	Checked: <i>N.M.</i>	Dated: <i>Jan 18</i>	
Drawing / Sketch No: <i>SH171042-05</i>			

PHASE 1 (5)
(2 of 4)

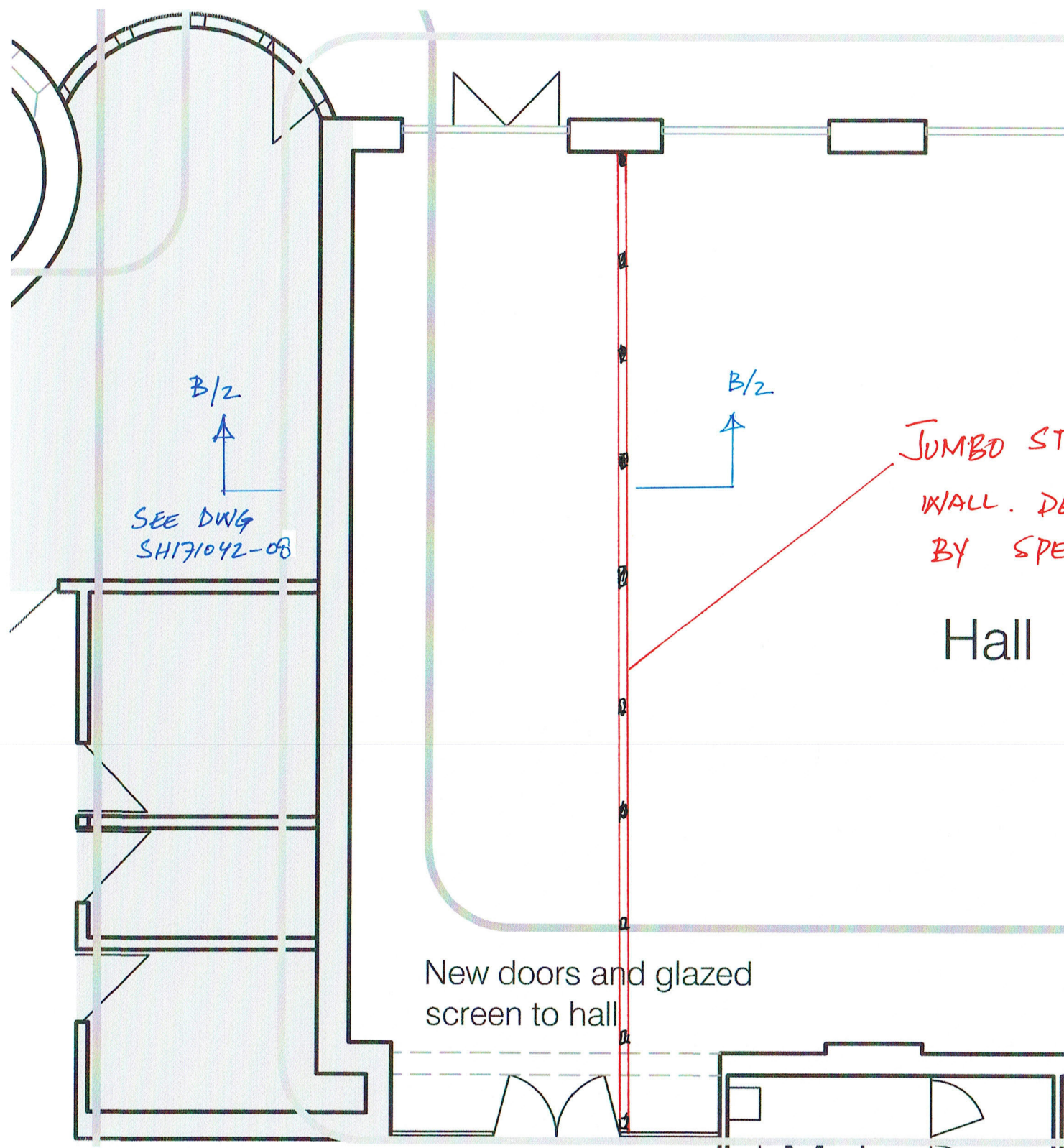


SECTION B/1 - B/1 (N.T.S)

Surrey Hills Consulting Engineers Alexander House 40A Wilbury Way Hitchin Herts SG4 0AP 01462 510102			
Project: <i>St Joseph's Church</i>			
Description: <i>Conceptual Design</i>			
Status: <i>P.L</i>	Scale: <i>N.T.S</i>	Rev: <i>0</i>	
Originator: <i>N.K</i>	Checked: <i>N.M</i>	Dated: <i>Jan-18</i>	
Drawing / Sketch No: <i>SH17/042-06</i>			

PHASE 1 (b)
(3 of 4)

ERECTION OF STUD WALL IN PARISH HALL



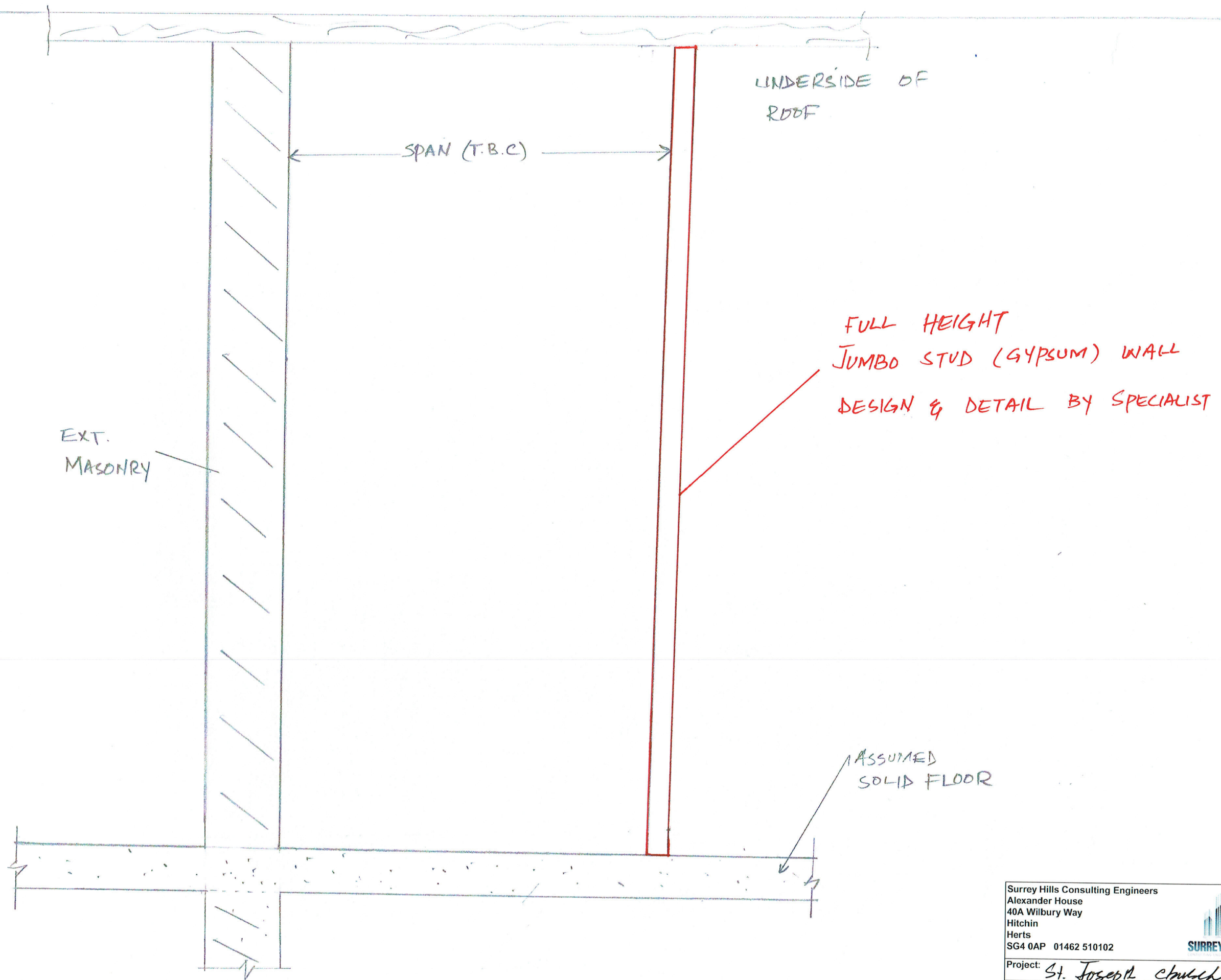
OPTION - B.

PART GROUND FLOOR PLAN SHOWING
JUMBO STUD (GYPSUM) WALL
N.T.S.


Surrey Hills Consulting Engineers Alexander House 40A Wilbury Way Hitchin Herts SG4 0AP 01462 510102			
Project:	St. Joseph's Church		
Description:	Conceptual Design		
Status:	P.L.	Scale: N.T.S.	Rev:
Originator:	N.K.	Checked: N.M.	Dated: 26/18
Drawing / Sketch No:	SH171042-07		

PHASE 1 (b)

(4 of 4)



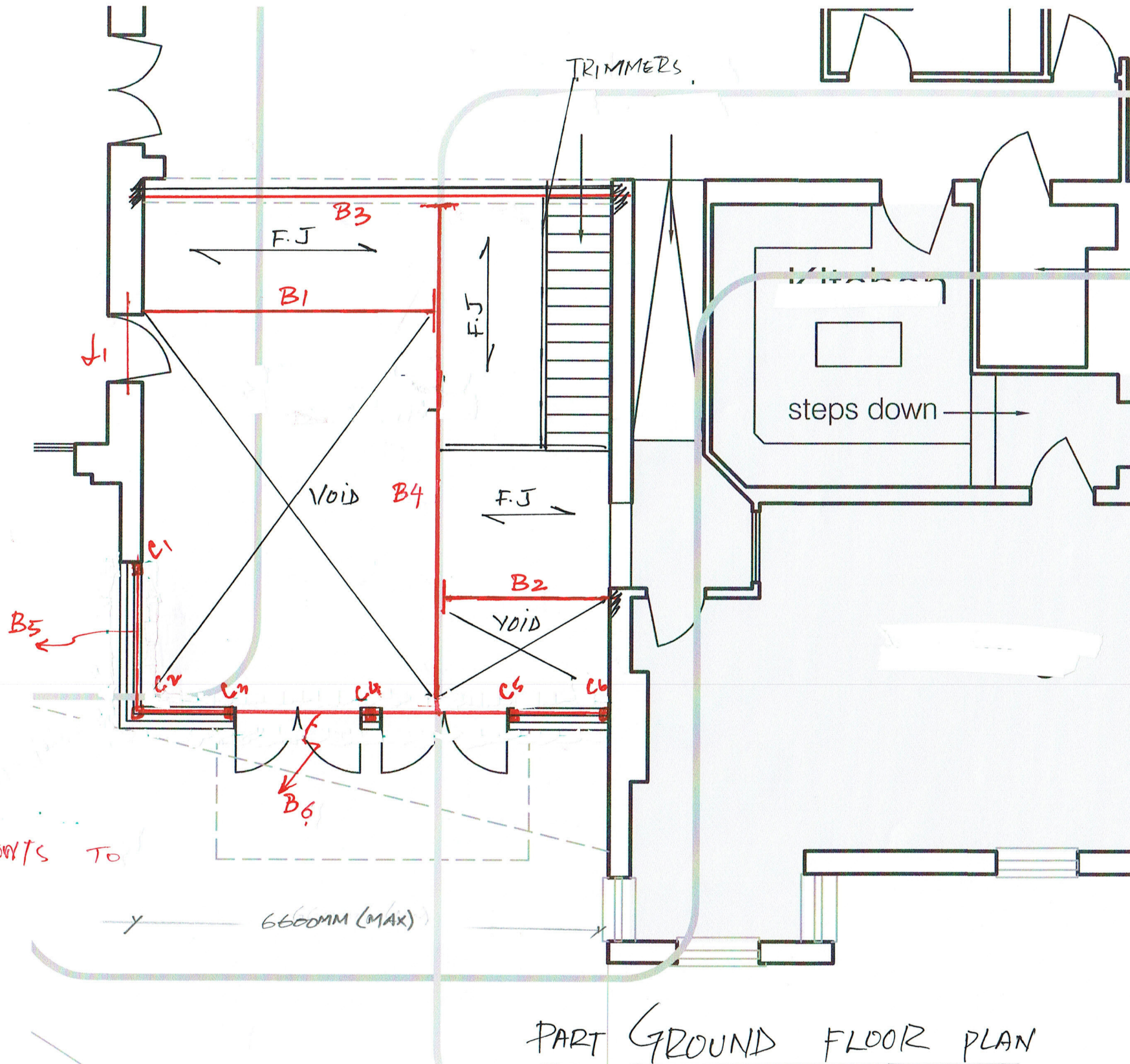
SECTION B/2' - B/2' (N.T.S)

Surrey Hills Consulting Engineers Alexander House 40A Wilbury Way Hitchin Herts SG4 0AP 01462 510102			 SURREY HILLS
Project:	St. Joseph church		
Description:	Conceptual Design		
Status:	PL.	Scale:	N.T.S
Originator:	N.K.	Checked:	N.M
Drawing / Sketch No:	SH171042-08		
		Rev:	
		Dated:	Jan 18

PHASE 2
(1 OF 4)

DOUBLE STOREY EXTENSION TO ENTRANCE LOBBY

KEY.



F.J	220x50 C24 @400c/c FLOOR JOISTS
B1, B2	200x90 PFC
B3, B4	203UC
B5, B6	203UC with 10mm BOTTOM PLATE (GALVANISED)
C1, C2, C3 C4, C5, C6	150x150 SHS2 T. (GALVANISED) B.C.
L1	IG / SIMILAR LINTEL TO SUIT MASONRY
TRIMMERS	200x90 PFC

NOTES:-

- ALL SERVICES / GAS POINTS TO BE RELOCATED.

PART GROUND FLOOR PLAN
SHOWING STRUCTURE OVER

OPTION - A

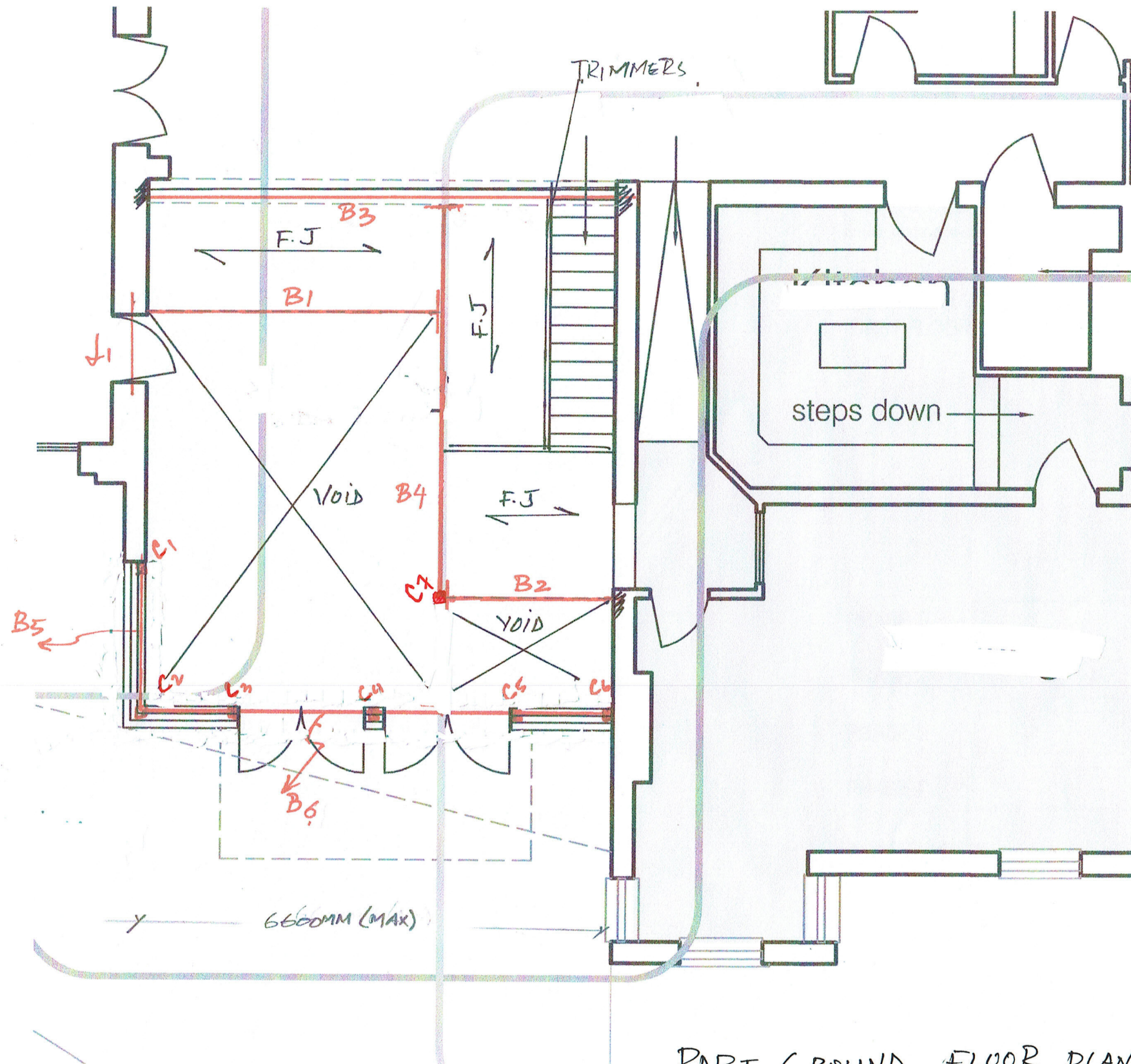
N.T.S

Surrey Hills Consulting Engineers Alexander House 40A Wilbury Way Hitchin Herts SG4 0AP 01462 510102			
Project: St. Joseph's Church			
Description: Conceptual Design			
Status: PRE-LI	Scale: N.T.S	Rev:	
Originator: N.K	Checked: N.M	Dated: Jan 18	
Drawing / Sketch No:			SH171042-09

PHASE 2
(2 of 4)

1. DOUBLE STOREY EXTENSION TO ENTRANCE LOBBY

KEY.



- F.J 220x50 C24 @400c/c
FLOOR JOISTS
- B1, B2 200x90 PFC
- B3, B4 203UC
- B5, B6 203 UC with 10mm
BOTTOM PLATE
(GALVANISED)
- C1, C2, C3 150x150 SHS2 T.
(GALVANISED) } B.C.
- C4, C5, C6
- L1 IG / SIMILAR LINTEL
TO SUIT MASONRY
- C7 152 UC
- TRIMMERS 200x90 PFC

PART GROUND FLOOR PLAN
SHOWING STRUCTURE OVER

OPTION - B

N.T.S

Surrey Hills Consulting Engineers Alexander House 40A Wilbury Way Hitchin Herts SG4 0AP 01462 510102			
Project: <u>St Joseph's Church</u>			
Description: <u>Conceptual Design</u>			
Status: <u>P.L</u>	Scale: <u>N.T.S</u>	Rev:	
Originator: <u>N.R</u>	Checked: <u>NM</u>	Dated: <u>Jan '18</u>	
Drawing / Sketch No: <u>SH171042-10</u>			

PHASE-2 : DOUBLE STOREY EXTENSION TO ENTRANCE LOBBY.
(3 of 4)

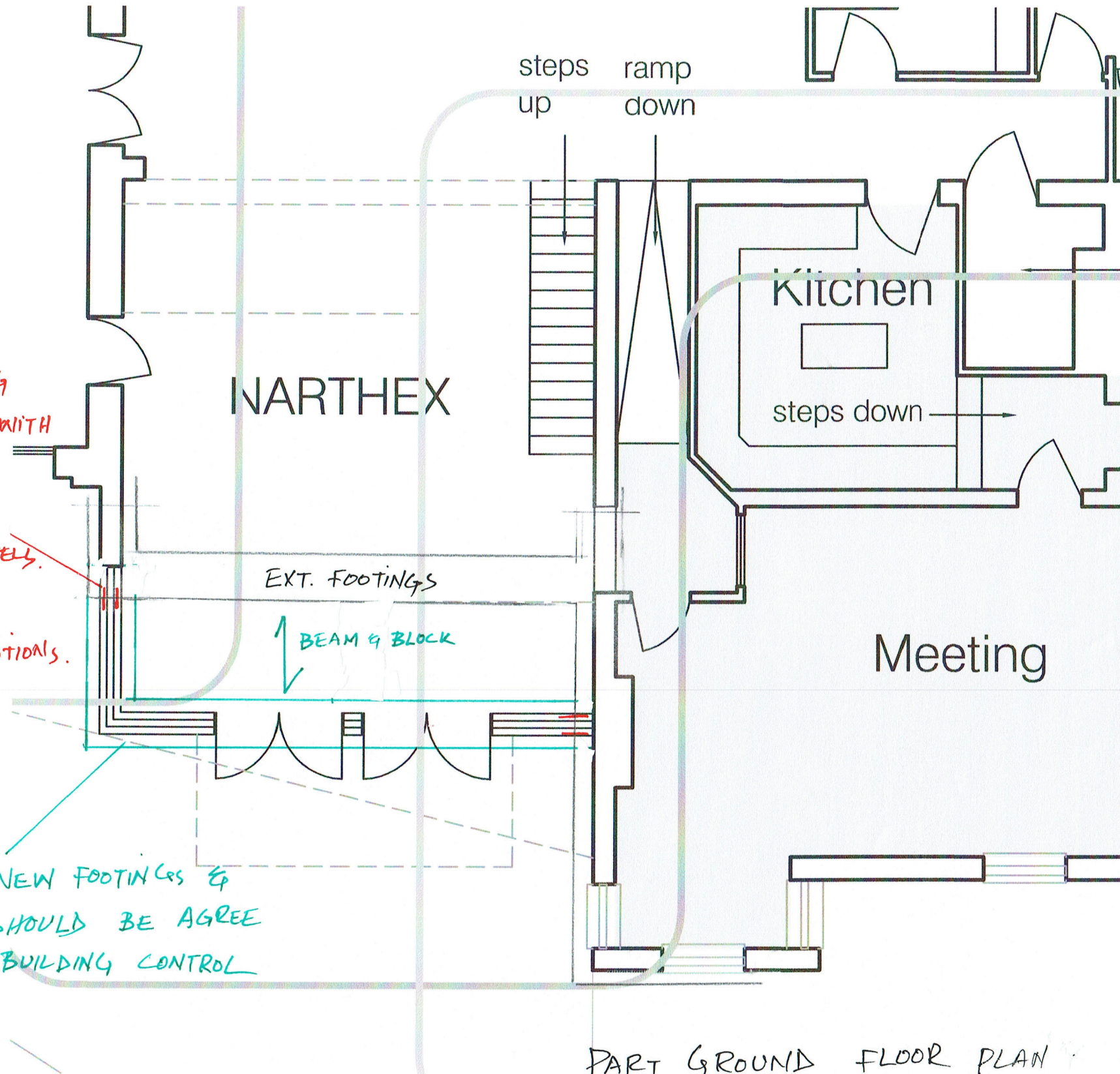
KEY

BEAM & BLOCK

T255/S10 WITH
300mm VOID
BELOW (TBC)

H12 DOWEL BARS x 600 LONG
FIXED TO EXT. FOUNDATIONS WITH
HILTY HY-200a RESIN OR
SIMILAR APPROVED AT MAX
300 CTR OR MIN 3 DOWELS.
MIN 40mm COVER TO BE
PROVIDED IN NEW FOUNDATIONS.

600mm NEW FOOTINGS &
DEPTH SHOULD BE AGREE
WITH BUILDING CONTROL



PART GROUND FLOOR PLAN

SHOWING FOUNDATIONS

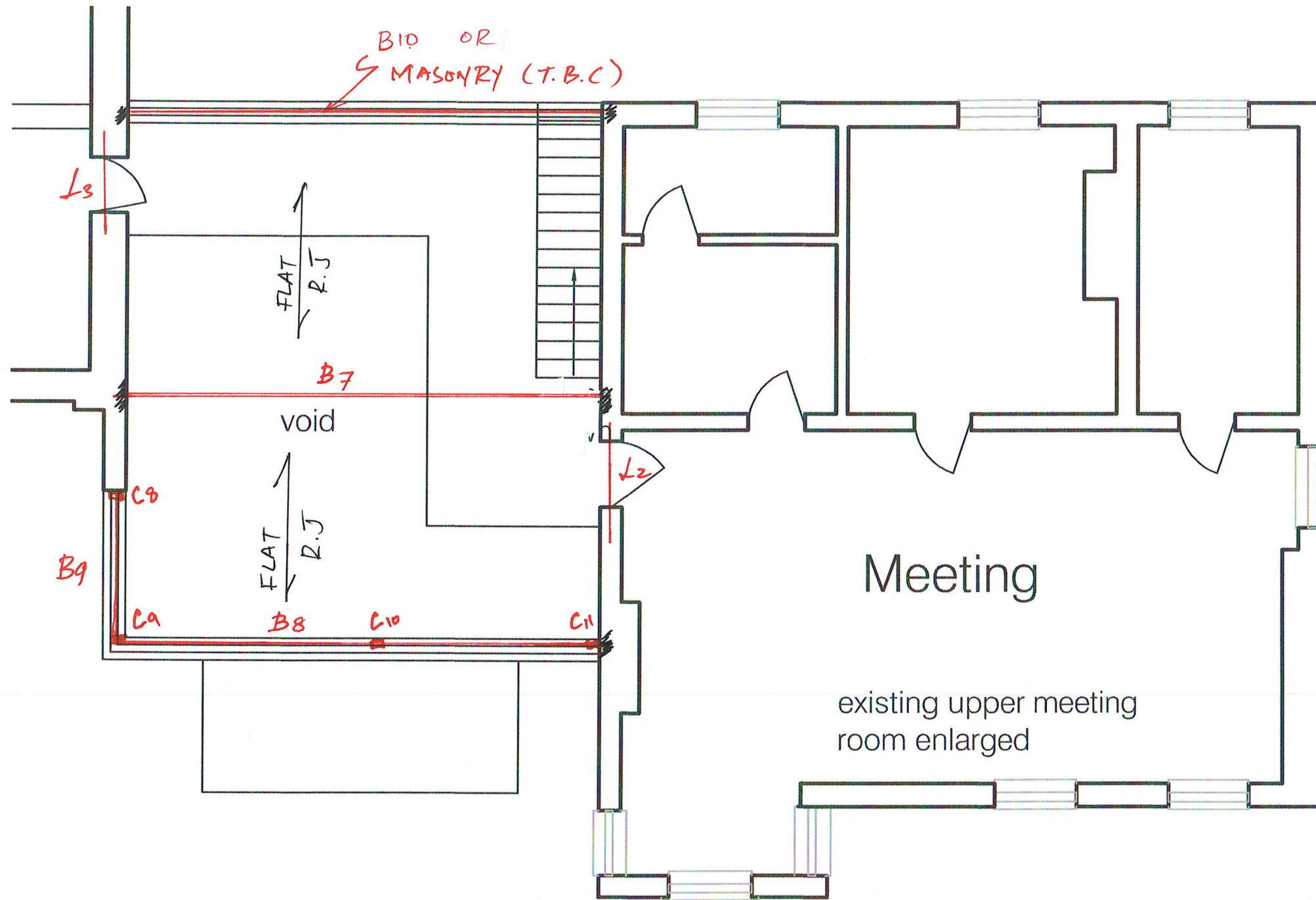
N.T.S.

Surrey Hills Consulting Engineers Alexander House 40A Wilbury Way Hitchin Herts SG4 0AP 01462 510102			
Project: <u>St. Joseph's church</u>			
Description: <u>Conceptual Design</u>			
Status: <u>P.L</u>	Scale: <u>N.T.S</u>	Rev:	
Originator: <u>N.K</u>	Checked: <u>N.M</u>	Dated: <u>Jan 18</u>	
Drawing / Sketch No: <u>SH171042-11</u>			

PHASE 2
(4 of 4)

DOUBLE STOREY EXTENSION TO ENTRANCE LOBBY :-


KEY



FLAT R.J	200x50 C24 @ 400 c/c
B7, B10	203 UC
B8, B9	203 UC WITH 10mm BOTTOM PLATE (T.B.C) GALVANISED
C8, C9	150x150 SHS
C10, C11	(T.B.C)
L2, L3	IG OR SIMILAR LINTEL TO SUIT MASONRY

PART FIRST FLOOR PLAN
SHOWING ROOF STRUCTURE

N.T.S.

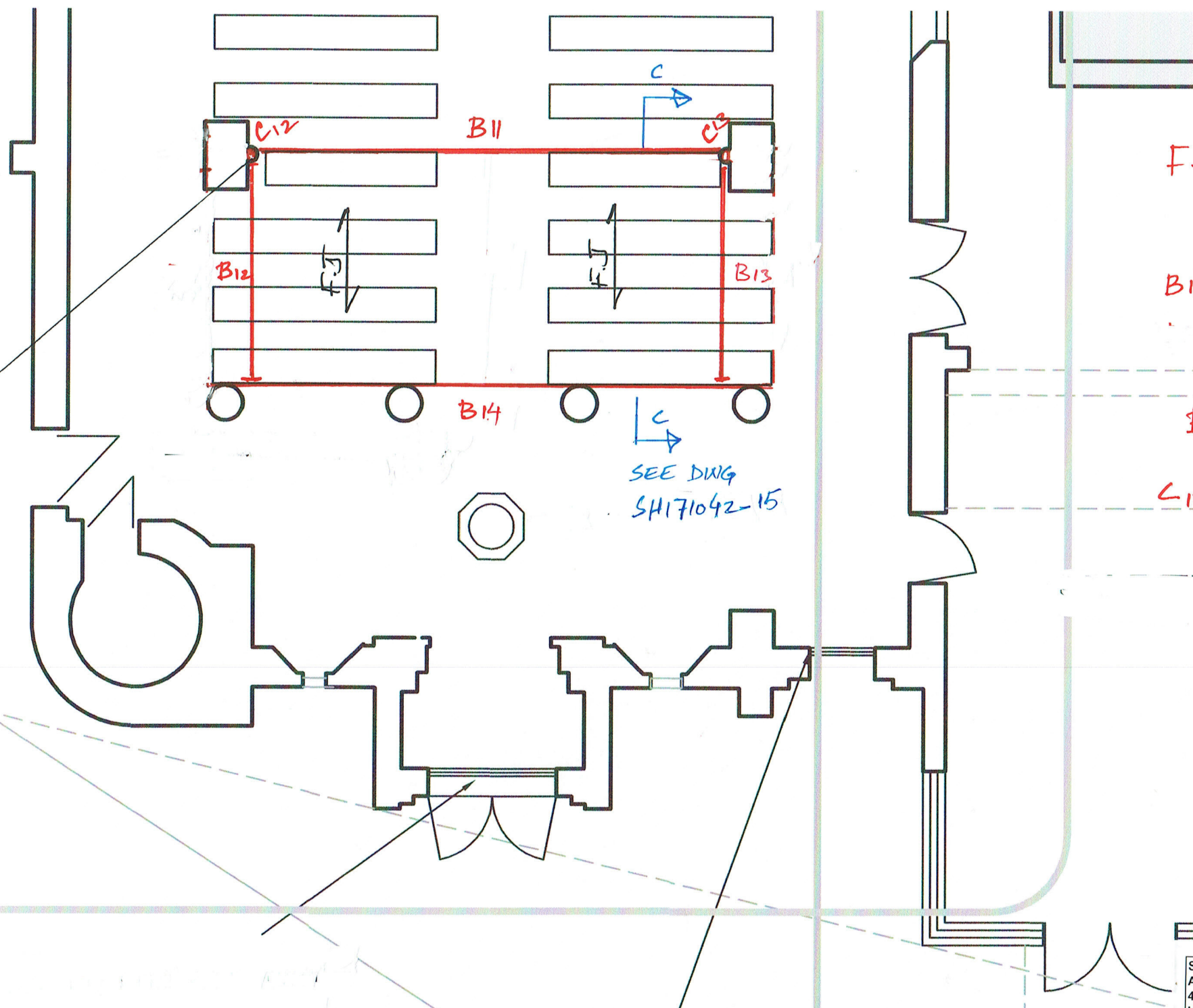
Surrey Hills Consulting Engineers Alexander House 40A Wilbury Way Hitchin Herts SG4 0AP 01462 510102			
Project: St. Joseph's church			
Description: conceptual design			
Status: P.L	Scale: N.T.S	Rev:	
Originator: N.K	Checked: N.M	Dated: Jan 18	
Drawing / Sketch No: SH171042 - 12			

PHASE 3
(1 of 3)

GALLERY EXTENSION

KEY.

STONE
CONC. PORTION CAREFULLY
REMOVED & REPLACED
IT WITH SHS OR CHS
STEEL COLUMN AND
CLAD TO MATCH
EXISTING.



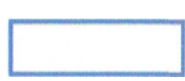
F.J	220x50 C24 @ 400 C/C FLOOR JOISTS
B12, B13	230x90 PFC.
B14	230x90 PFC
B11	254 UC
C12, C13	150x150 SHS (T.B.C)

PART GROUND FLOOR PLAN

SHOWING STRUCTURE OVER

N.T.S

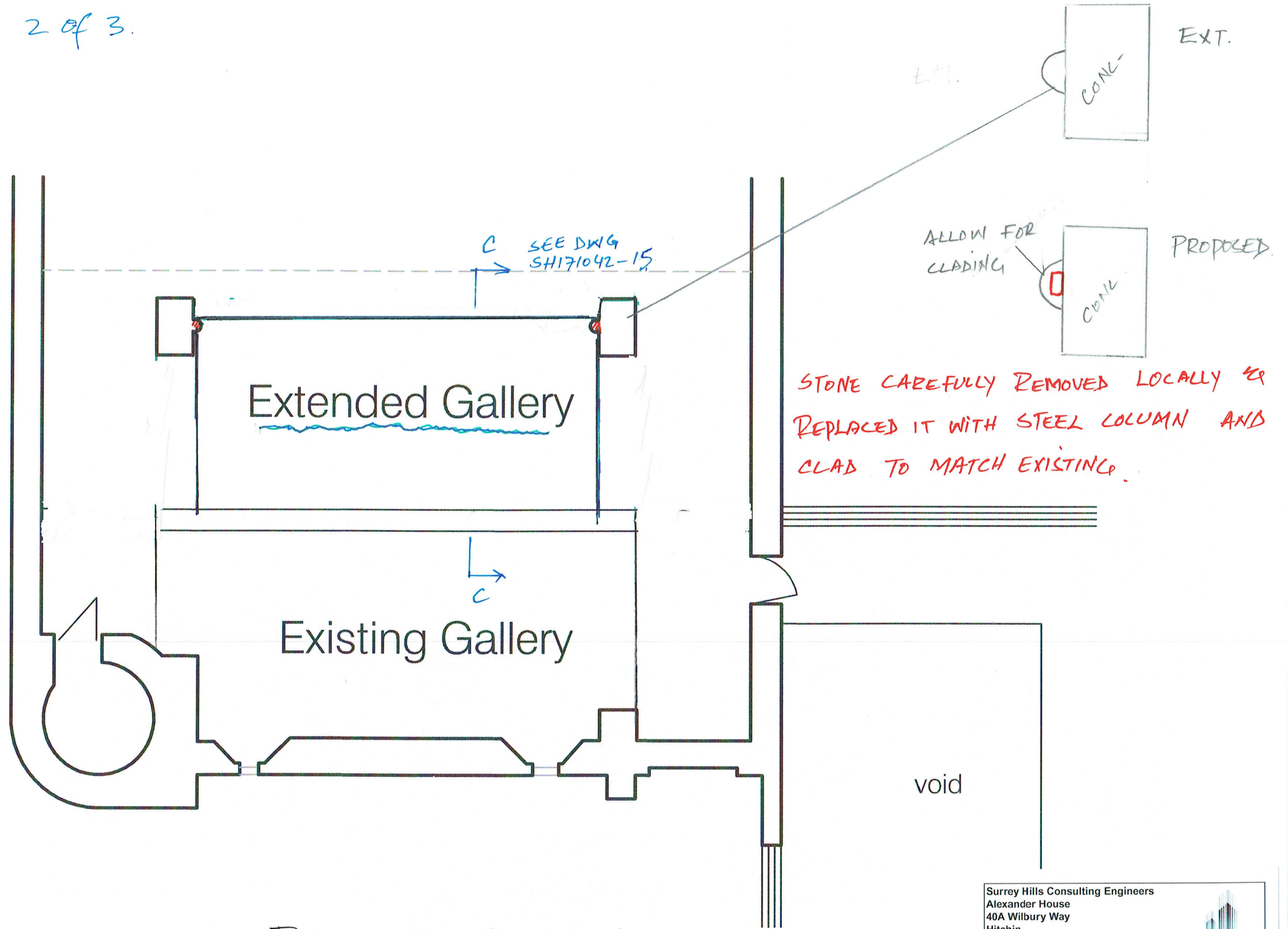
Surrey Hills Consulting Engineers Alexander House 40A Wilbury Way Hitchin Herts SG4 0AP 01462 510102			
Project: <u>St. Joseph's Church</u>			
Description: <u>Conceptual Design</u>			
Status: <u>PL</u>	Scale: <u>N.T.S</u>	Rev:	
Originator: <u>N.K</u>	Checked: <u>N.M</u>	Dated: <u>Jan'18</u>	
Drawing / Sketch No: <u>SH171042-13</u>			



PHASE 3

2 of 3.

GALLERY EXTENSION



PART FIRST FLOOR PLAN

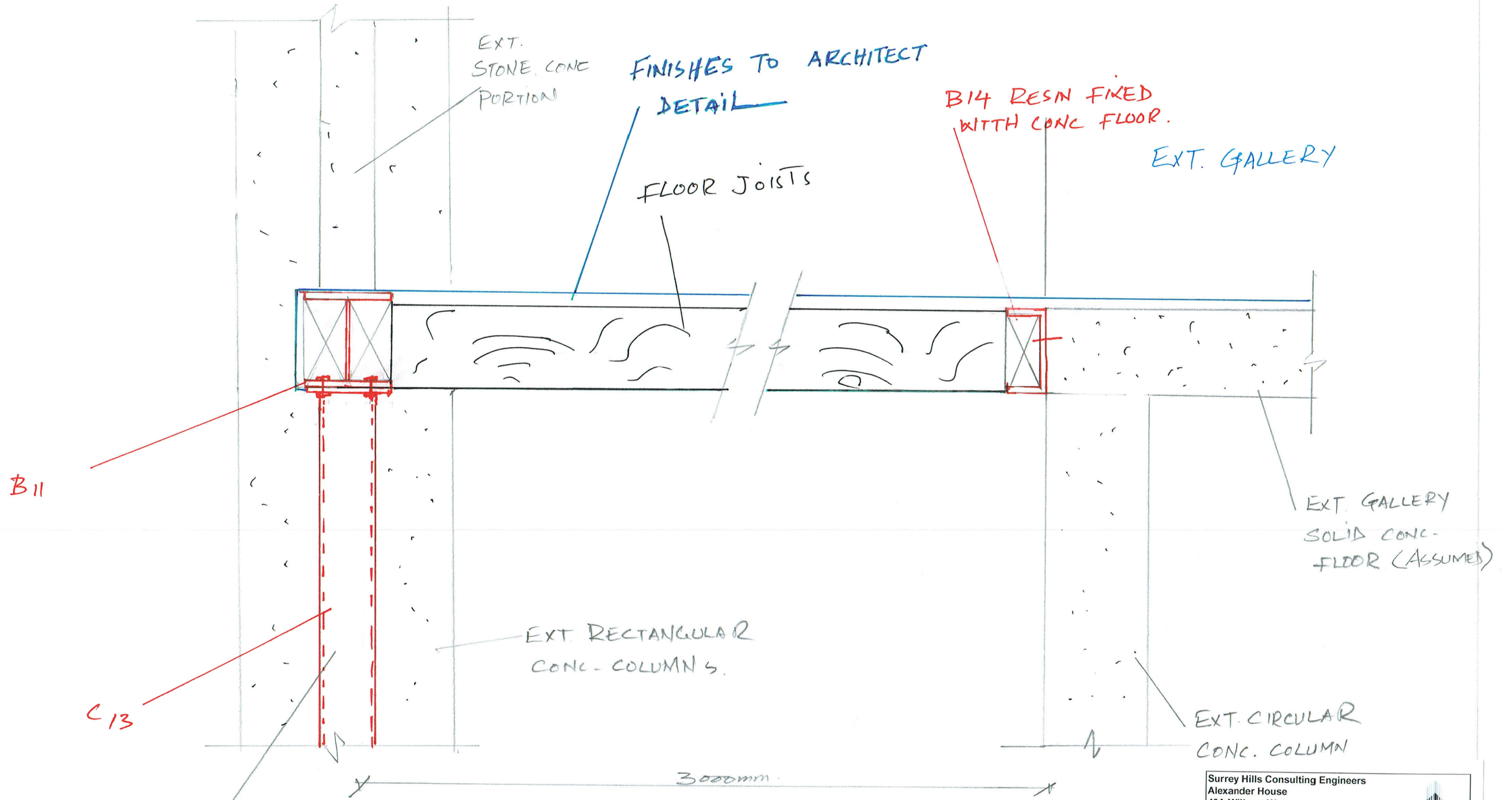
SHOWING EXTENDED GALLERY

N.T.S.

Surrey Hills Consulting Engineers Alexander House 40A Wilbury Way Hitchin Herts SG4 0AP 01462 510102			
Project: <i>St. Joseph's Church</i>			
Description: <i>Conceptual Design</i>			
Status: <i>Pre.</i>	Scale: <i>N.T.S.</i>	Rev:	
Originator: <i>N.K.</i>	Checked: <i>N.M.</i>	Dated: <i>Jan 18</i>	
Drawing / Sketch No: <i>SH171042-14</i>			


PHASE 3
(3 of 3)

GALLERY EXTENSION.

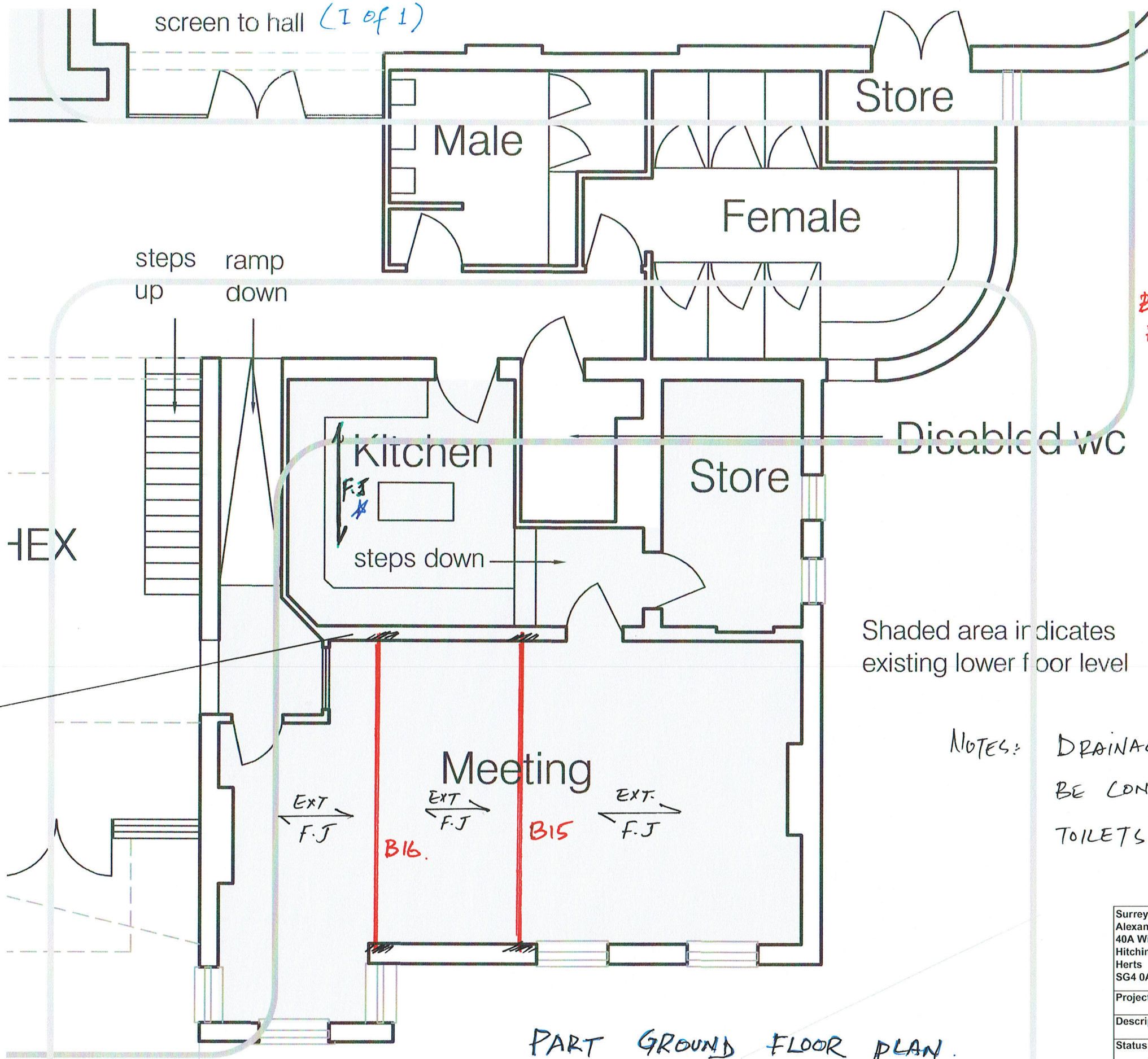


EXT STONE PORTION CAREFULLY REMOVED LOCALLY & REPLACED IT WITH STEEL COLUMN.

SECTION C-C
N.T.S.

Surrey Hills Consulting Engineers Alexander House 40A Wilbury Way Hitchin Herts SG4 0AP 01462 510102			 SURREY HILLS
Project: <i>St. Joseph's Church</i>			
Description: <i>Conceptual Design</i>			
Status: <i>N.P.</i>	Scale: <i>N.T.S.</i>	Rev:	
Originator: <i>N.P.</i>	Checked: <i>N.M.</i>	Dated: <i>Jan 18</i>	
Drawing / Sketch No: <i>SH171042-15</i>			

PHASE 4 : INTERNAL ALTERATIONS TO PRESBYTERY :



KEY.

- F.J | 220x50 C240
400C/K FLOOR-
JOISTS
- B15,
B16 | 203 VC

Shaded area indicates existing lower floor level

NOTES: DRAINAGE / SERVICES TO BE CONSIDERED IF WC / TOILETS ARE SHIFTED.

ASSUMED LOAD BEARING SOLID WALL

PART GROUND FLOOR PLAN.
SHOWING STRUCTURE OVER. N.T.S.

Surrey Hills Consulting Engineers Alexander House 40A Wilbury Way Hitchin Herts SG4 0AP 01462 510102			
Project: <i>St. Joseph's Church</i>			
Description: <i>Conceptual Design</i>			
Status: <i>PL</i>	Scale: <i>N.T.S.</i>	Rev:	
Originator: <i>N.C.</i>	Checked: <i>N.M.</i>	Dated: <i>Jan 18</i>	
Drawing / Sketch No: <i>SH171042-16</i>			